

Title: Buleria Fundamentals

Key : Dm (A Phrygian)

Time : 12/8

Style: Buleria

Buleria(s) is a flamenco dance comprised of 12 beats. Usually starting on beat 12, the counting is as follows:

12-1-2-3-4-5-6-7-8-9-10-11

It originated in Jerez, often as a fast ending to the Alegrias or Soleares. The word comes from Burlar which means to joke or to mock.

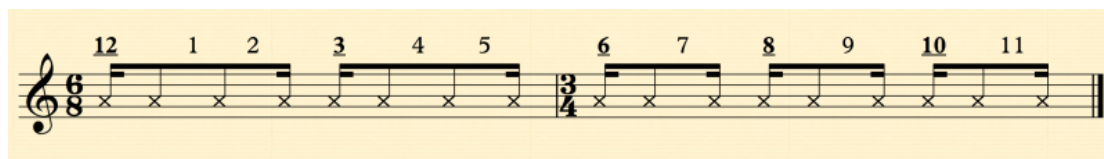
Notes

- Spend time familiarizing your self with this rhythm and counting.
- Start at a moderate tempo and slowly build speed.

Technical

Here are the various steps you can take in developing the Buleria:

Clap or use rasgado on muted strings:



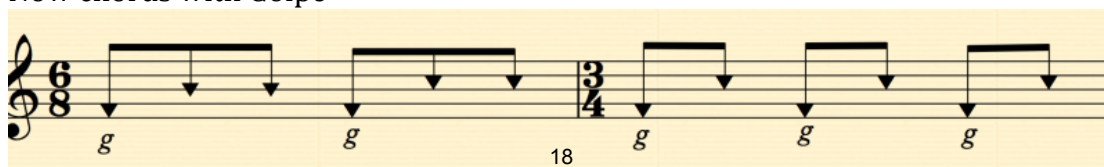
You can now add a 'g' golpe (see Golpe lesson in Tech Work section)



Now let's add some chords



Now chords with Golpe



Lets include two chords A7 and Bb

Diagram showing a guitar exercise on a single staff. The exercise consists of two measures. The first measure contains a sequence of notes: 5, 12, 1, 2, 3, 4, 5, 6, 7, 8, 9, 10, 11. The second measure contains notes: 6, 7, 8, 9, 10, 11. Chord diagrams for A7(b9) and Bb are shown above the staff. The notes are grouped into measures by vertical lines. The notes are marked with 'x' on the staff, indicating fret positions. The notes are grouped into measures by vertical lines. The notes are marked with 'x' on the staff, indicating fret positions.

now with C9

Diagram showing a guitar exercise on a single staff. The exercise consists of two measures. The first measure contains a sequence of notes: 5, 12, 1, 2, 3, 4, 5, 6, 7, 8, 9, 10, 11. The second measure contains notes: 6, 7, 8, 9, 10, 11. Chord diagrams for A7(b9), Bb, and C9 are shown above the staff. The notes are grouped into measures by vertical lines. The notes are marked with 'x' on the staff, indicating fret positions. The notes are grouped into measures by vertical lines. The notes are marked with 'x' on the staff, indicating fret positions.

a rhythmic variation

Diagram showing a guitar exercise on a single staff. The exercise consists of two measures. The first measure contains a sequence of notes: 7, 12, 1, 2, 3, 4, 5, 6, 7, 8, 9, 10, 11. The second measure contains notes: 6, 7, 8, 9, 10, 11. Chord diagrams for A7(b9), Bb, and C9 are shown above the staff. The notes are grouped into measures by vertical lines. The notes are marked with 'x' on the staff, indicating fret positions. The notes are grouped into measures by vertical lines. The notes are marked with 'x' on the staff, indicating fret positions.

With arpeggio at the end:

Diagram showing a guitar exercise on a single staff. The exercise consists of two measures. The first measure contains a sequence of notes: 7, 12, 1, 2, 3, 4, 5, 6, 7, 8, 9, 10, 11. The second measure contains notes: 6, 7, 8, 9, 10, 11. Chord diagrams for A7(b9), Bb, and C9 are shown above the staff. The notes are grouped into measures by vertical lines. The notes are marked with 'x' on the staff, indicating fret positions. The notes are grouped into measures by vertical lines. The notes are marked with 'x' on the staff, indicating fret positions.