

Rumba Nova Part 1

Key : A minor

Time: 4/4

Style: Rumba

Techniques: Rumba Strumming, slurs

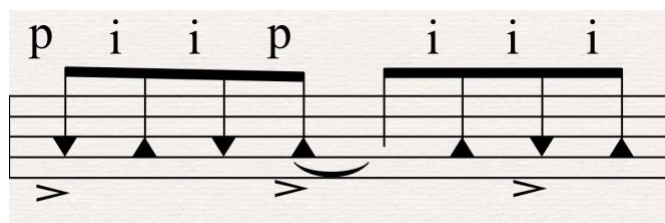
About: This is the first part of a Rumba that I wrote recently and perform often. It is in the Rumba style which is a flamenco form of medium to slow pace characterized by a 3 - 3 - 2 pattern. This pattern is strummed in a certain way to bring out the accents on beats 1 4 and 6 = that is **1 2 3 4 5 6 7 8**.

I interplay a melody in A minor in between the Rumba accompaniment. I also utilize slurs (pull-offs and hammer-ons) to create flow and speed. The chord progression also uses a Circle of Fifths sequence = Dm - G - C - F - Bm7b5 - E7 which is very common in Latin guitar styles and worth knowing.

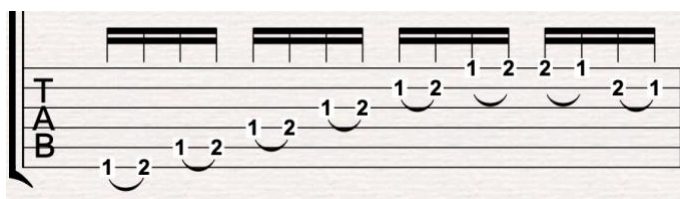
Challenges: The transition between chords and melody is tricky and needs practice at slow tempos. The slurs also need practice as they can take time to develop. They need good timing and snap. If you are new to Rumba strumming that may take you some time to perfect. I recommend listening to pieces like Entre Dos Aguas to get the feel and sound you are trying to go for.

Exercises:

RUMBA Strumming pattern:



Slur Exercises



The image displays two systems of musical notation for guitar, each consisting of a treble clef staff and a bass clef staff. The notation is designed for practicing sixteenth-note patterns with specific fingerings.

System 1:

- Treble Staff:** Features four groups of sixteenth-note beamed pairs. The first group has a bar line above it. The second group has a bar line above it. The third group has a bar line above it. The fourth group has a bar line above it. The notes are: G4 (1), A4 (3), B4 (1), C5 (3), D5 (3), E5 (1), F5 (3), G5 (1), A5 (3), B5 (3), C6 (1), D6 (3).
- Bass Staff:** Features four groups of sixteenth-note beamed pairs. The first group has a bar line above it. The second group has a bar line above it. The third group has a bar line above it. The fourth group has a bar line above it. The notes are: G3 (1), F3 (3), E3 (1), D3 (3), C3 (1), B2 (3), A2 (2), G2 (4), F2 (2), E2 (4), D2 (2), C2 (4), B1 (2), A1 (4).

System 2:

- Treble Staff:** Features four groups of sixteenth-note beamed pairs. The first group has a bar line above it. The second group has a bar line above it. The third group has a bar line above it. The fourth group has a bar line above it. The notes are: G4 (2), A4 (3), B4 (2), C5 (3), D5 (2), E5 (3), F5 (2), G5 (3), A5 (2), B5 (3), C6 (2), D6 (3).
- Bass Staff:** Features four groups of sixteenth-note beamed pairs. The first group has a bar line above it. The second group has a bar line above it. The third group has a bar line above it. The fourth group has a bar line above it. The notes are: G3 (2), F3 (3), E3 (2), D3 (3), C3 (2), B2 (3), A2 (3), G2 (4), F2 (3), E2 (4), D2 (3), C2 (4), B1 (3), A1 (4).